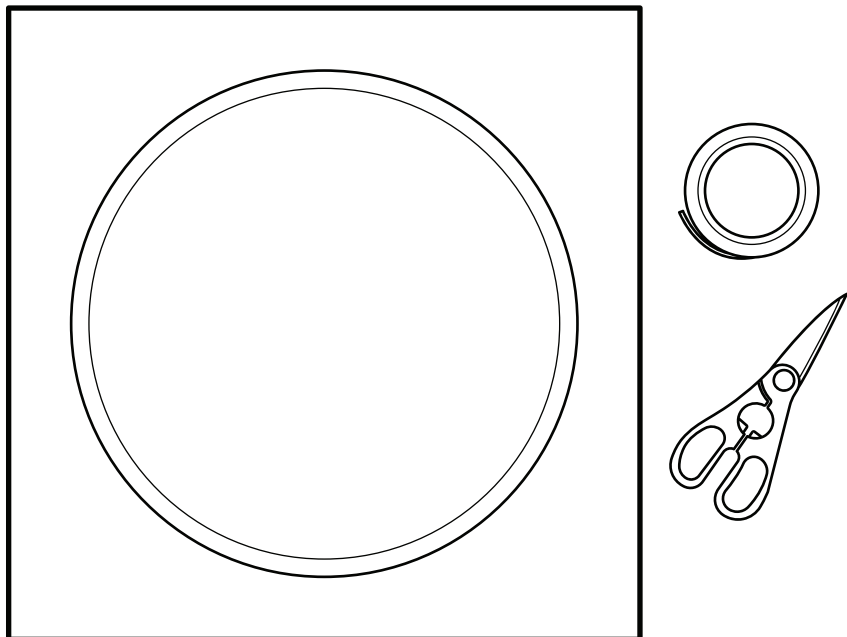


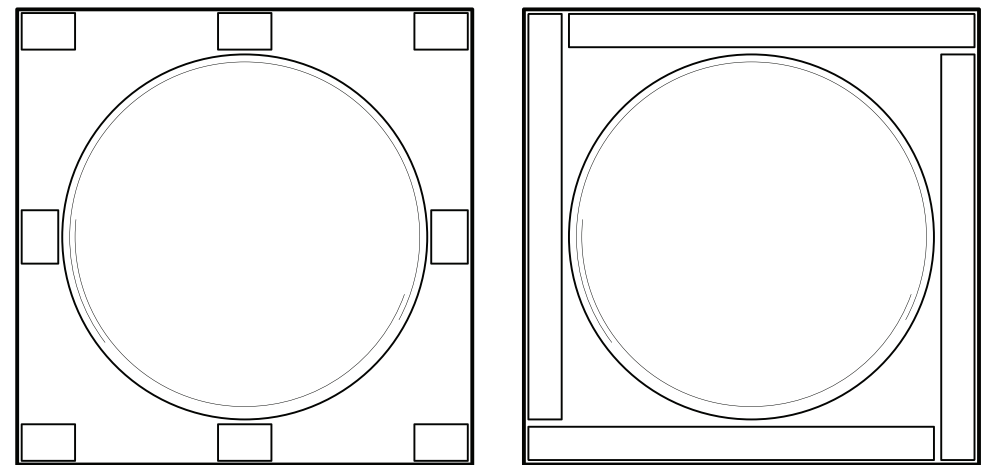
INSTRUCTIONS FOR INSTALLATION

STEP 1



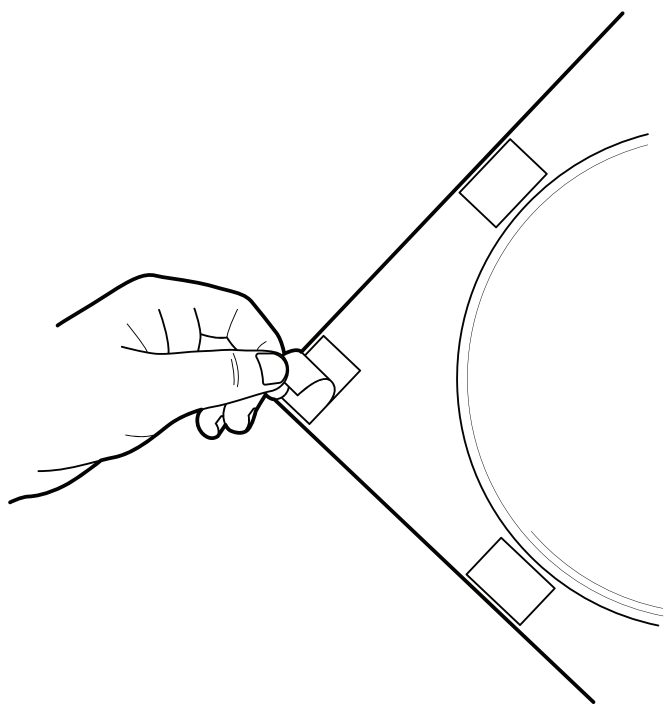
The double sided tape is cutted (with a scissor) and is mounted on the back of the wall panel.

STEP 2



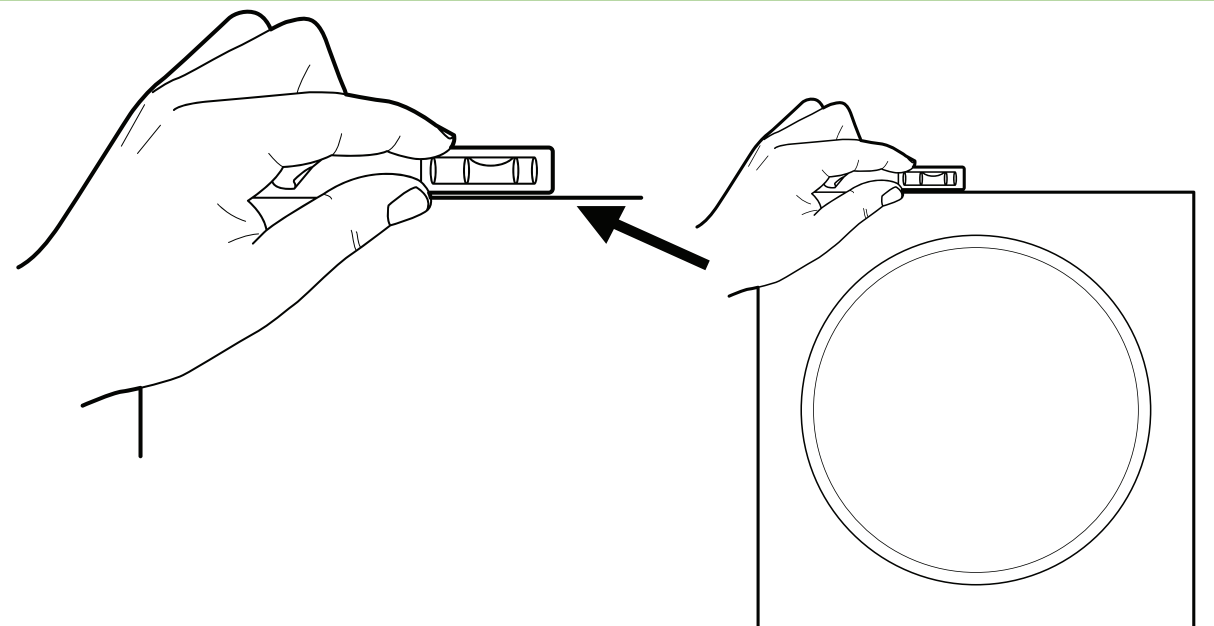
Depending how strong you want to stick the panel to the wall you can adjust the amount of tape.

STEP 3



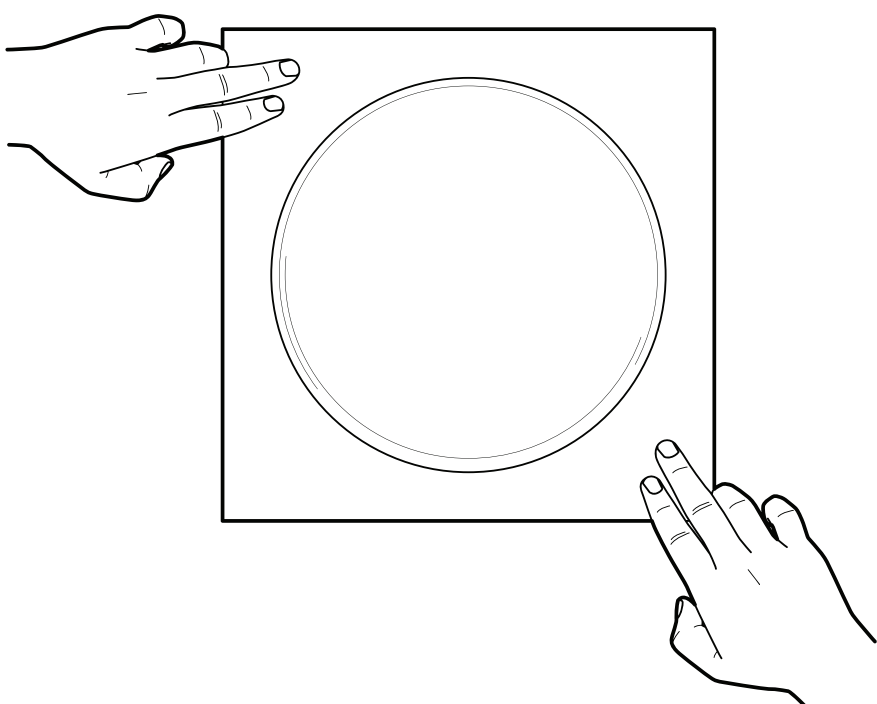
Release the paper from the tape of the back of the panel.

STEP 4



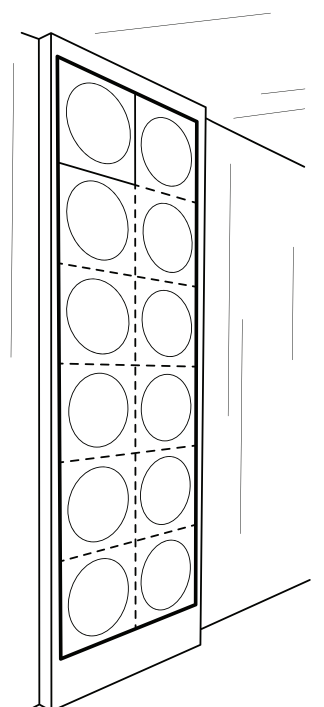
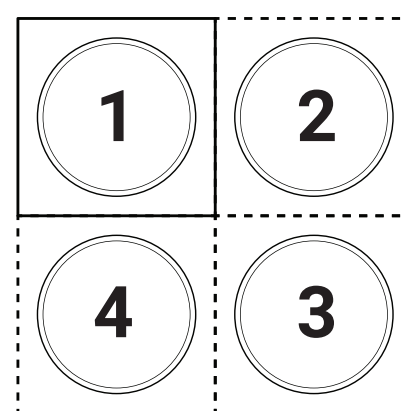
Use a bubble level and put it on top of the wall panel and position with your other hand the panel until the bubble is centered between the two lines.

STEP 5



Stick the panel against the wall and press for 5 seconds on the tape joints to the wall.

STEP 6



After the first panel is fixed, the adjacent panel is easily positioned to the previous.